

# KROY®

## ***Industrial On Demand Identification Solutions***

*Communication • Electrical • Aviation • Avionics • Library • Security • Computer Installations • Marine • Mining*



***Labels with up to  
10 year exterior  
life.***



***Your choice of 3 New Labelmakers  
that can print to the largest range  
of supplies available.***

- ***Polyester Industrial Labels***
- ***Cast Vinyl Labels***
- ***Self Laminating Wire Wrap***
- ***Shrink Tube***



***Meter Australia Pty Ltd  
Ph: 1300 720 481  
Fax: 1300 720 491***

***www.meter.com.au***

*email: sales@meter.com.au*



## KROY® K3100 PC INDUSTRIAL LABEL PRINTER

The K3100-PC Companion Label Printer provides all the conveniences of your PC in a small footprint. K3100-PC is accompanied by Kroy Label Design Software (KLDS) for you to customize any label application using the fonts, symbols and graphics available on your PC. You can also print from Microsoft Word, Excel and other PC applications. This versatility makes labelling easy!

The K3100-PC uses the easy to load Kroy Cartridge System to solve all of your labelling needs with the click of a mouse. K3100-PC shares the same cartridge system as the K5100, K4100 and K-Series printers.

### K3100-PC Features

- Thermal transfer print technology
- Connects to your PC
- Resolution of 300 DPI
- Customize labels using fonts and graphics from your PC
- KLDS Software included to print graphics, bar codes and data
- Prints up to 6 lines of text
- On-board memory to store label formats and fonts
- Real time clock with time/date stamping ability
- 25 resident bar codes including Code 39 and Code 128
- Supports baud rates up to 115,200 bps
- Alpha/Numeric sequencing (A-Z, 1-999)
- Repeat function allows up to 999 copies
- Built-in cutter and feed control to eliminate waste
- Print styles include frame, bold, italic, underline and mirror
- Rotate feature for landscape or portrait mode
- Vertical and horizontal print formats
- Print speeds up to 2 ips (inches per second) -50mm

### K3100-PC Printer & Accessories

Part #	Description	Part #	Accessories
2564000	K3100-PC Printer Includes: K3100-PC Printer, Manual, CD-ROM w/KLDS Software and Drivers, Serial Cable, AC Adapter with Power Cord	2563000	AC Adapter (100-240v, 50-60Hz)
		2558800	Serial Cable
		2559000	Thermal Printhead Cleaning Kit (25 pack)

### K3100-PC Physical Dimensions

6" L x 3.75" D x 4" H (152mm L x 95mm D x 101mm H)

### K3100-PC Environmental Specifications

- Operating temperature: 45 to 105 F (7 to 40 C)
- Printer storage temperature: -20 to 150 F (-30 to 65 C)
- Supply cartridge storage temperature: -60 to 105 F (15 to 40 C)  
shelf life reduced at higher temperatures - damage may occur at  
temperatures as high as 120 F (50 C)
- Operating and storage humidity limit 90% RH non-condensing

### K3100-PC Electrical Specifications

- AC Adapter Input: 100-250 VAC, 50/60 Hz, 43W;  
AC Adapter Output: 12Vdc, UL, C-UL, CE
- Meets VDE-B and FCC Part 15 class B RFI Limits
- RS 232 Serial Port, 9600-115200

### Resident Bar Codes

- Code 39 (supports ratios of 2:1 and 3:1)
- Extended Code 39
- Codabar (supports ratios of 2:1, 3:1 and modulus 10 and 16 check digits)
- Interleaved 2 of 5 (supports ratios of 2:1 and 3:1 and modulus 10 check digit)
- EAN/JAN-8, EAN/JAN-13
- UPC-A, UPC-E (11 digit)
- PDF-417
- MSI-Plessey, Maxicode
- Code 49
- Postnet Zip +4
- Code 93
- Extended 93
- UCC 128
- HIBC
- UPC-E-0-System (6 digit)
- UPC-E-1-System (6 digit)
- Code 128 Auto
- Code 128 A, B, C
- Code 16K Auto
- Code 16K A, B, C





## KROY® K4100 DESKTOP INDUSTRIAL LABELMAKER

*Faster... Smarter... Better. The K4100 Desktop Labelmaker offers built-in flexibility that most desktop models lack. Fast print speeds, auto sizing feature and cartridge based supplies, make labelling easy and hassle free!*

*Other features include 300DPI resolution, downloadable and scaleable fonts, on-board memory to save files and auto sensors that detect the cartridge media. Connect the K4100 to your PC and create custom labels with crisp graphics and bar codes using the KLDS Software included with your K4100 purchase. The K4100 is the ultimate desktop labelmaker available!*

### Physical Dimensions

- Resolution of 300 DPI
- Auto sizing text feature
- Thermal transfer print technology
- Two line x 16 character LCD display
- 6-72 point sizes
- Prints 6 lines of text
- Use stand alone or with your PC
- Downloadable and scaleable fonts
- On-board memory to store formats and fonts
- Flash upgradeable firmware
- Real time clock with time/date stamping ability
- 10 resident bar codes including Code 39 and Code 128
- Multi-language prompts including English and Spanish
- Alpha/Numeric sequencing (A-Z, 1-999)
- Repeat function allows up to 999 copies
- Built-in cutter and feed control to eliminate waste
- Print styles include frame, bold, italic, underline and mirror
- Rotate feature for landscape or portrait mode
- Vertical or horizontal print formats
- Audible key clicks and error messages
- Print speeds up to 2 ips (inches per second) - 50mm

### Electrical Dimensions

- AC Adapter Input 100-250 VAC, 50/60 Hz, 43W
- AC Adapter Output: 12 Vdc, UL, C-UL, CE
- Meets VDE-B and FCC Part 15 class B RFI limits
- RS 232 Serial Port, 9600-115200 baud

### Environmental Dimensions

- Operating temperature: 45 to 105 F (7 to 40 C)
- Printer storage temperature: -20 to 150 F (-30 to 65 C)
- Operating/storage humidity limit 90% RH non-condensing

### Physical Dimensions

- 9.50" L x 8" D x 2.75" H (241mm L x 203mm D x 70mm H)

### K4100 Labelmaker & Accessories

Part Number	Product Description
2562000	K4100 Includes: K4100 Manual, CD-ROM w/KLDS Software & Drivers, Serial Cable, AC Adapter with Power Cord Accessories
2563000	AC Adapter (100 - 240V)
2558800	Serial Cable
2559000	Thermal Printhead Cleaning Kit (25)
2562900	Carrying Case





# KROY®

## K5100 PORTABLE HANDHELD INDUSTRIAL LABEL PRINTER



*Faster...Smarter...Better. The K5100 Handheld Labelmaker is the perfect printer for any install. This printer was engineered for professionals on-site. Connect the K5100 to your PC or take it with you to your install. The built-in battery charger makes it the best portable unit available! Plus, the fast print speeds, auto sizing feature and cartridge based supplies, make labelling easy and hassle free!*

*Other features include 300 DPI resolution, downloadable and scaleable fonts, increased on-board memory to save files and auto sensors that detect the cartridge media. K5100 is the ultimate on-site, point of application labelmaker available.*

### Physical Dimensions

- Resolution of 300 DPI
- Auto sizing text feature
- Thermal transfer print technology
- Two line x 16 character LCD display
- 6-72 point sizes
- Prints 6 lines of text
- Use stand alone or with your PC
- Downloadable and scaleable fonts
- On-board memory to store formats and fonts
- Flash upgradeable firmware
- Internal battery charger
- Real time clock with time/date stamping ability
- 10 resident bar codes including Code 39 and Code 128
- Multi-language prompts including English and Spanish
- Alpha/Numeric sequencing (A-Z, 1-999)
- Repeat function allows up to 999 copies
- Built-in cutter and feed control to eliminate waste
- Print styles include frame, bold, italic, underline and mirror
- Rotate feature for landscape or portrait mode
- Vertical or horizontal print formats
- Audible key clicks and error messages
- Print speeds up to 2 ips (inches per second) - 50mm

### Electrical Dimensions

- Battery operated or AC Adapter
- AC Adapter Input 100-250 VAC, 50/60 Hz, 43W
- AC Adapter Output: 12Vdc, UL, C-UL, CE
- Batteries optional: (6) C-size rechargeable nickel-cadmium batteries 2500mAh
- Meets VDE-B and FCC Part 15 class B RFI limits
- RS 232 Serial Port, 9600-115200 baud

### Environmental Dimensions

- Operating temperature: 45 to 105 F (7 to 40 C)
- Printer storage temperature: -20 to 150 F (-30 to 65 C)
- Operating/storage humidity limit 90% RH non-condensing

### Physical Dimensions

- 11" L x 6" D x 4" H (280mm L x 153mm D x 102mm H)

### K5100 Labelmaker & Accessories

Part Number	Product Description
2561000	K5100 Includes: K5100 Manual CD-ROM w/KLDS Software & Drivers Serial Cable, AC Adapter with Power Cord Accessories
2563000	AC Adapter (110V)
2558800	Serial Cable
2449300	(6) Premium NiCD Batteries
2559000	Thermal Printhead Cleaning Kit (25)
2563900	Carrying Case

\* Batteries and Supply Cartridge not included with Labelmaker



# www.meter.com.au

# KROY®

**KROY K SERIES  
CARTRIDGE SUPPLIES TO  
SUIT K3100, K4100, K5100**

## LOAD, LOCK & PRINT



*The Kroy K3100, K4100 and K5100 Label Printers all use a superior range of cartridge tape supply, that surpasses other desktop printers with its built-in flexibility and versatility. All machines use the K-series range of consumables that offer the user a wide choice of labelling solutions.*

*The Kroy range of industrial Labellers can sense the supply you have loaded. Making labelling easy and fast. No formatting required. Plus, the easy to load cartridge system makes switching supplies a breeze.*

## PC FRIENDLY

*The K3100, K4100 and K5100 are all PC friendly Labelmakers, you can download your favourite fonts right into your Kroy Labeller. The K series printers also come with a serial cable allowing you to plug and play with our KLDS Software and/or Microsoft Word/Excel.*

*Run sequenced labels or wire wraps before you go to the job site or print 1 label at a time.*

*The choice is yours....*



**[www.meter.com.au](http://www.meter.com.au)**

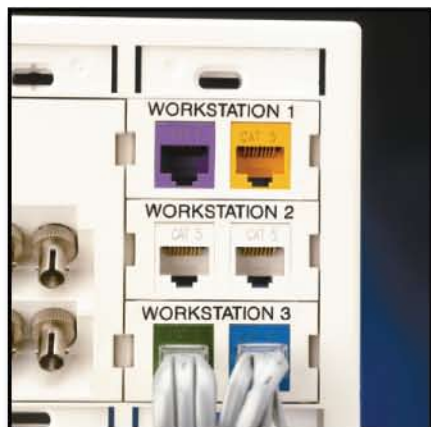


# KROY®

**KROY K SERIES  
CARTRIDGE SUPPLIES TO  
SUIT K3100, K4100, K5100**

## POLYESTER INDUSTRIAL LABELS

Identify everything from terminal blocks, component identification to company files and employee records. Ideal for smooth, flat surfaces - these labels come in a variety of colours and sizes.



### PRODUCT SPECIFICATIONS

Industrial UV and Chemical Resistant. 2.0 mil pressure sensitive polyester. Water and Abrasion Resistant. Operating temperature range of -40° to 160°C (320 F). High performance label stock with up to 7 year exterior life. Cartridge contains media and thermal transfer resin ribbon.

PART NO	DIMENSIONS	LABEL COLOUR
2487901	12.7mm (.5") x 12.19M (40")	BLACK ON CLEAR
2487916	12.7mm (.5") x 12.19M (40")	BLACK ON WHITE
2487943	12.7mm (.5") x 12.19M (40")	BLACK ON YELLOW
2438601	25.4mm (1") x 12.19M (40")	BLACK ON CLEAR
2438616	25.4mm (1") x 12.19M (40")	BLACK ON WHITE
2438643	25.4mm (1") x 12.19M (40")	BLACK ON YELLOW
2438639	25.4mm (1") x 12.19M (40")	BLACK ON GREEN
2438631	25.4mm (1") x 12.19M (40")	BLACK RED
2438635	25.4mm (1") x 12.19M (40")	BLACK ON BLUE
2438621	25.4mm (1") x 12.19M (40")	BLACK ON SILVER
2438626	25.4mm (1") x 12.19M (40")	BLACK ON GOLD
2438620	25.4mm (1") x 12.19M (40")	WHITE ON BLACK
2438602	25.4mm (1") x 12.19M (40")	WHITE ON CLEAR
2438632	25.4mm (1") x 12.19M (40")	WHITE ON BLUE
2438636	25.4mm (1") x 12.19M (40")	WHITE ON RED
2438640	25.4mm (1") x 12.19M (40")	WHITE ON GREEN
2438618	25.4mm (1") x 12.19M (40")	RED ON WHITE
2438617	25.4mm (1") x 12.19M (40")	BLUE ON WHITE

**OTHER SIZE LABELS AVAILABLE!  
CALL FOR DETAILS 1300 720 481**

[www.meter.com.au](http://www.meter.com.au)



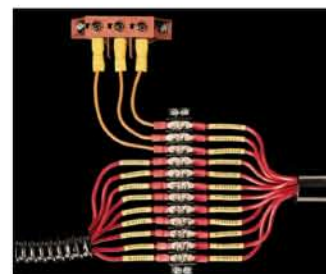
# KROY®

## KROY K SERIES CARTRIDGE SUPPLIES TO SUIT K3100, K4100, K5100

## SHRINK TUBE LABELS

### FOR ELECTRICAL IDENTIFICATION OF WIRE AND CABLE

Continuous heat shrink tubing provides the most professional, durable and permanent ID for any installation. Create multiple sleeves in the length of your choice - using one cartridge.



### PRODUCT SPECIFICATIONS

3:1 shrink ratio. Flexible Polyolefin tubing and thermal transfer ribbon in a cartridge. Low recovery temperature of 194 F; Flame, chemical, water and abrasion resistant. Operating temperature range of -55 C to 135 C (275 F) with up to 392 F for short duration. Meets Military specification MIL-1-23053/5 Class 1 and 3, MIL-1R 46846 Type V and UL-224 VW-1 rating.



PART NO	DIMENSIONS	LABEL COLOUR	FITS WIRE GAUGE
2470001	3.17mm (.125") x 2.8M (110")	BLACK ON WHITE	22-16 Gauge
2470002	3.17mm (.125") x 2.8M (110")	BLACK ON YELLOW	22-16 Gauge
2470011	4.77mm (.188") x 2.8M (110")	BLACK ON WHITE	18-12 Gauge
2470012	4.77mm (.188") x 2.8M (110")	BLACK ON YELLOW	18-12 Gauge
2470021	6.35mm (.25") x 2.8M (110")	BLACK ON WHITE	16-10 Gauge
2470022	6.35mm (.25") x 2.8M (110")	BLACK ON YELLOW	16-10 Gauge
2470031	9.52mm (.375") x 2.8M (110")	BLACK ON WHITE	14-4 Gauge
2470032	9.52mm (.375") x 2.8M (110")	BLACK ON YELLOW	14-4 Gauge
2470041	12.7mm (.50") x 2.8M (110")	BLACK ON WHITE	12-1 Gauge
2470042	12.7mm (.50") x 2.8M (110")	BLACK ON YELLOW	12-1 Gauge

## SELF LAMINATING WIRE WRAP LABELS

### FOR ELECTRICAL IDENTIFICATION OF WIRE AND CABLE

Identify terminated wires or new installs! The laminated tail protects printed information from solvents, and moisture. Our wire wraps assure a professional look for any wire or cable.

AND SO EASY TO USE 1...2...3...



See over for product range and technical specifications

[www.meter.com.au](http://www.meter.com.au)



# KROY®

**KROY K SERIES  
CARTRIDGE SUPPLIES TO  
SUIT K3100, K4100, K5100**

## SELF LAMINATING WIRE WRAP LABELS (CONTINUED)



### PRODUCT SPECIFICATIONS

4.0mil translucent vinyl with white printable area.  
Aggressive, permanent, adhesive. Chemical and water resistant. Ideal for exterior use or harsh environments. Meets EIA-TIA-606, BS EN ISO 60950, FAA AC 43.13A building codes and other standards. Cartridge contains media and thermal transfer resin ribbon.

PART NO	DIMENSIONS	FITS WIRE GAUGE	WIRE WRAP COLOUR	LABELS PER CARTRIDGE
2556708	6.35mm x 25.4mm (P) x 12.7mm (W)	22-16 Gauge	BLACK ON WHITE	277
2556704	9.53mm x 25.4mm (P) x 19.05mm (W)	16-10 Gauge	BLACK ON WHITE	250
2556707	9.53mm x 25.4mm (P) x 25.40mm (W)	12-10 Gauge	BLACK ON WHITE	225
2556702	19.05mm x 25.4mm (P) x 31.75mm (W)	12-8 Gauge	BLACK ON WHITE	170
2556703	19.05mm x 25.4mm (P) x 63.5mm (W)	10-6 Gauge	BLACK ON WHITE	120
2556701	25.4mm x 25.4mm (P) x 101.6mm (W)	6-4 Gauge	BLACK ON WHITE	80
2556705	38.1mm x 25.4mm (P) x 152.40mm (W)	4-0 Gauge	BLACK ON WHITE	60

## CAST VINYL INDUSTRIAL LABELS - for harsh environments



Panel and warning labels

Ideal for rough, irregular surfaces - our Cast Vinyl is tough and flexible. Cast Vinyl has excellent conformability making it great for curved surfaces and marking pipes.

### PRODUCT SPECIFICATIONS

2.0mil pressure sensitive 3M Cast Vinyl; UV, chemical and water resistant. Operating temperature range -45 C to 82 C (180 F). UL recognition and CSA acceptance. **Up to 10 year Exterior Life.** Cartridge contains media and thermal transfer resin ribbon.



Equipment identification

PART NO	DIMENSIONS	LABEL COLOUR
2558301	12.7mm (.5") x 12.19M (40")	BLACK ON CLEAR
2558316	12.7mm (.5") x 12.19M (40")	BLACK ON WHITE
2558331	12.7mm (.5") x 12.19M (40")	BLACK ON BLUE
2558335	12.7mm (.5") x 12.19M (40")	BLACK ON RED
2558343	12.7mm (.5") x 12.19M (40")	BLACK ON YELLOW
2558101	25.4mm (1") x 12.19M (40")	BLACK ON CLEAR
2558116	25.4mm (1") x 12.19M (40")	BLACK ON WHITE
2558121	25.4mm (1") x 12.19M (40")	BLACK ON SILVER
2558131	25.4mm (1") x 12.19M (40")	BLACK ON BLUE
2558135	25.4mm (1") x 12.19M (40")	BLACK ON RED
2558143	25.4mm (1") x 12.19M (40")	BLACK ON YELLOW



Laboratory and hospital

**www.meter.com.au**

**Ph: 1300 720 481**

**Fax: 1300 720 491**